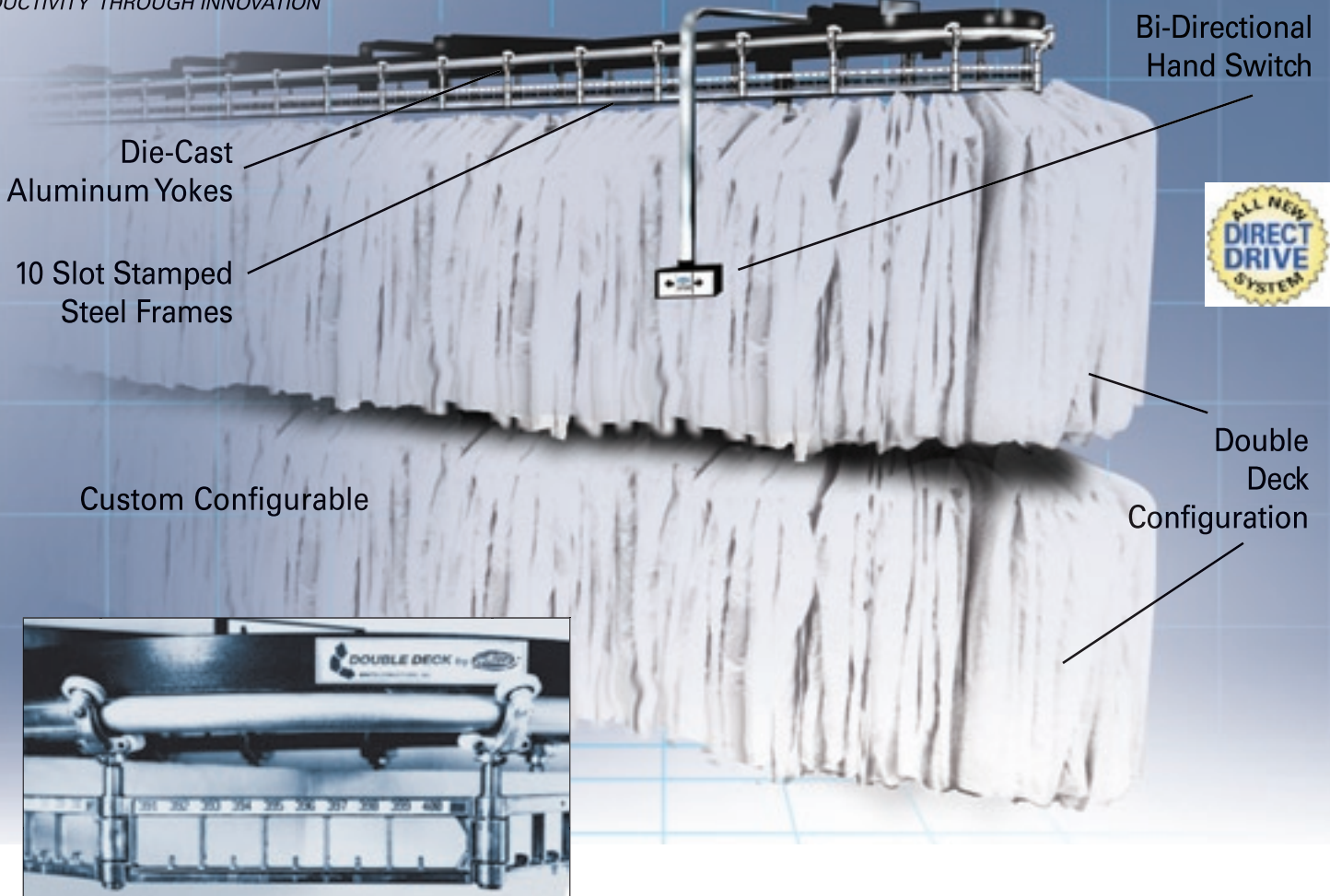




PRODUCTIVITY THROUGH INNOVATION

Double Deck Garment Conveyor



DOUBLE DECK CONVEYOR

White's Double Deck conveyor provides convenient access to two full levels of hung garments, shirts, slacks or other long garments. Both of the layers operate together at the touch of a button.

Double Deck conveyors are available in two configurations, the DS and DW models. Both permit mixing of long and short garments.

The DS model conveyor has a fixed drop rod every two frames with a lower level cast aluminum frame. It can be used on a single plain conveyor with fixed rods of any length.

The DW model has a removable drop rod located at each frame with a nylon lower frame. It is a fluid non-fixed frame (available in any length) which allows the conveyor to be configured as an Up-n-Down.

FEATURES

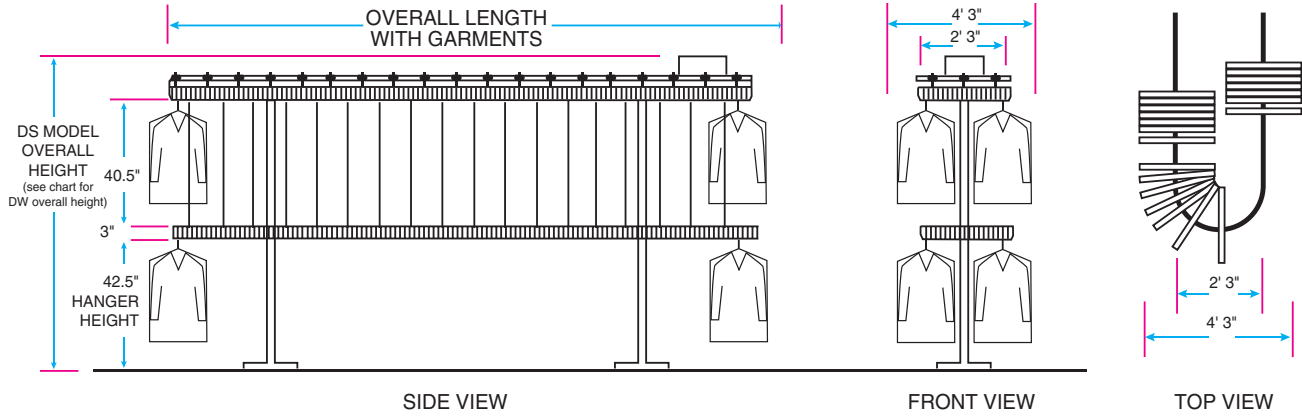
- Custom designed for the maximum increase in your storage capacity.
- Each configuration can be expanded or altered as your needs change.
- Bi-directional hand switch – standard.
- Series 540 Automatic Keyboard control – optional. Microprocessor control selects shortest route to item location.
- DS has 10 slot aluminum upper and lower frame, 12" pitch.
- DW has 10 slot aluminum upper and 10 slot nylon lower frame, 12" pitch.
- Hardened steel universal with heat treated steel insert bushings.



Double Deck Garment Conveyor

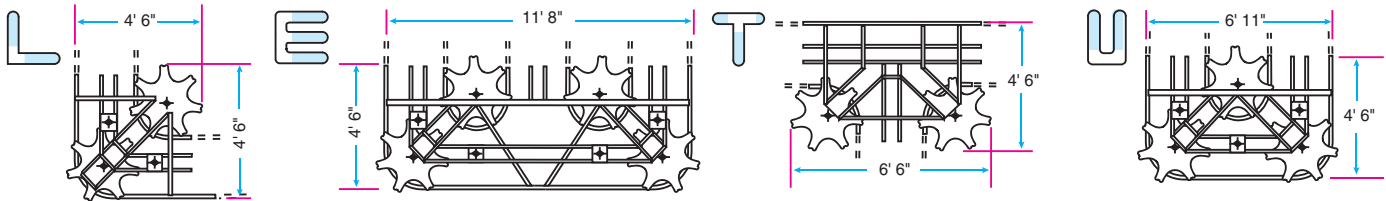
PRODUCTIVITY THROUGH INNOVATION

CONVEYOR SPECIFICATIONS (Short/Short)



TYPICAL MODULAR SECTION SHAPES

White Conveyors are available in a wide variety of special shapes. You can "design your own conveyor" to fit most any length or shape by using our standard "modular" sections. Here are some typical shapes.



MODEL DS (Aluminum Upper and Lower Frames) MODEL DW (Aluminum Upper and Nylon Lower Frames)

Conveyor Model & No. of Slots	Length of Hanging Capacity	Overall Length with Garments
DS200 DW200	40'0"	11'0"
DS220 DW220	44'0"	12'0"
DS240 DW240	48'0"	13'0"
DS260 DW260	52'0"	14'0"
DS280 DW280	56'0"	15'0"
DS300 DW300	60'0"	16'0"
DS320 DW320	64'0"	17'0"
DS340 DW340	68'0"	18'0"
DS360 DW360	72'0"	19'0"
DS380 DW380	76'0"	20'0"
DS400 DW400	80'0"	21'0"
DS440 DW440	88'0"	23'0"
DS480 DW480	96'0"	25'0"
DS520 DW520	104'0"	27'0"
DS560 DW560	112'0"	29'0"
DS600 DW600	120'0"	31'0"
DS640 DW640	128'0"	33'0"
DS680 DW680	136'0"	35'0"
DS720 DW720	144'0"	37'0"
DS760 DW760	152'0"	39'0"
DS800 DW800	160'0"	41'0"

* One hand switch furnished.

Model No.	OVERALL HEIGHT Configuration	Height
DS	Short / Short	98"
DW	Short / Short	100"
DS	Short / Long	114"
DW	Short / Long	116"
DS	Long / Long	134"
DW	Long / Long	136"

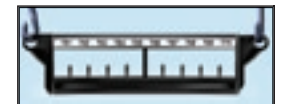


DS and DW aluminum upper frame

The Double Deck offers two levels of storage on a single conveyor. Mix short and long segments with transitional rods.



DS aluminum lower frame



DW nylon lower frame



White Conveyors, Inc.
 10 Boright Avenue, Kenilworth, NJ 07033
 Toll Free: (800) 524-0273
 Tel: (908) 686-5700
 www.white-conveyors.com