

# INSTALLATION & PARTS MANUAL



**U-Pick It**

**MODEL UPI**

Rev 1.02

---

## TABLE OF CONTENTS

### DESCRIPTION

<b>WCI EQUIPMENT WARRANTY .....</b>	<b>2</b>
<b>WCI SOFTWARE WARRANTY .....</b>	<b>3</b>
<b>INTRODUCTION .....</b>	<b>6</b>
<b>U-PICK-IT CONVEYOR .....</b>	<b>7</b>
1. <i>UNCRATING .....</i>	8
2. <i>CONVEYOR ASSEMBLY PROCEDURE .....</i>	8, 9
3. <i>CONVEYOR CHAIN ASSEMBLY .....</i>	9
4. <i>LEVELING, ANCHORING AND BRACING .....</i>	10
5. <i>DETERMINING TRACK LENGTH .....</i>	10
6. <i>SPEED REDUCER .....</i>	10
7. <i>SPEED REDUCER DRIVE CHAIN ADJUSTMENT .....</i>	10
8. <i>SPEED REDUCER LUBRICATION .....</i>	10
9. <i>MOTOR DRIVE BELT ADJUSTMENT .....</i>	11
10. <i>CLUTCH .....</i>	11
11. <i>HAND SWITCH AND HAND SWITCH ARM ASSEMBLY .....</i>	12, 13
12. <i>U-PICK-IT CHAIN ASSEMBLY .....</i>	14
13. <i>U-PICK-IT DESCRIPTION AND INSTALLATION INSTRUCTIONS .....</i>	15, 16
1. <i>Pneumatic Garment Lock System .....</i>	16, 17
2. <i>Front Enclosure .....</i>	18-21
14. <i>U-PICK-IT ELECTRICAL INSTRUCTIONS AND REQUIREMENTS .....</i>	22-26



## WCI EQUIPMENT WARRANTY

### LIMITED WARRANTY

All new White Conveyors, Inc., ("WCI") equipment is warranted against defective workmanship and material for a period of one (1) year from the date of shipment. This limited warranty covers materials only. Labor is specifically excluded.

WCI shall not be held liable for charges or repairs in the field that include, but are not limited to: portal to portal travel expenses, per diem meal allowances, lodging, round trip air fare, automobile rental, etc.

WCI shall not be responsible for defective installation or erection when performed by any other than WCI employees, or its authorized agents, nor for any parts that fail therefrom.

WCI shall not be liable for customs duties, brokerage fees, or other costs related to obtaining warranted replacement parts.

WCI shall, at its discretion, either repair and return the defective component, or ship a new replacement part.

When WCI authorizes a warranty replacement, a Return Authorization Number (RAN) will be issued to you. All components return shipped to WCI must display the RAN Number on the exterior of the package. Components returned without prior authorization and/or the RAN number displayed on the package cannot be processed. All returns must be shipped to WCI freight prepaid. Other than UPS, all warranty replacements will be returned to the customer freight collect. Kindly direct your request for an RAN number to our manufacturing facility in Kenilworth, New Jersey at: 1-800-524-0273.

This limited warranty does not cover the failure of parts due, in whole or part, to the customer's negligence, abuse/misuse, or lack of use of the recommended maintenance procedures. Moreover, this limited warranty will not apply to customers whose payment accounts are more than thirty (30) days past due.

There are no warranties that extend beyond the face hereof. WCI expressly disclaims any other warranties, including, without limitation, the implied warranty of merchantability and the implied warranty of fitness for a particular purpose. In addition, WCI shall not be liable for incidental or consequential damages arising from or relating to claims brought pursuant to this limited warranty or claims under any agreement between WCI and customer.

It is agreed that WCI is a New Jersey corporation, with its principal place of business in Kenilworth, New Jersey. Although the locations of customer's facilities are not necessarily located in New Jersey, this contract was negotiated, executed and intended to be performed in Kenilworth, New Jersey. It is



WHITE CONVEYORS, INC.,  
LIMITED SOFTWARE WARRANTY  
(For Computerized Systems)

Recognizing that the payment of the purchase price by customer will not fully reimburse White Conveyors, Inc., ("WCI"), for the full expense of developing software for customer, the parties agree that payment hereunder conveys to customer, a non-exclusive, non-assignable license for the use of the software purchased under this agreement, but such license does not include the right to reproduce, publish or license such software to others. WCI expressly reserves and expressly consents that the entire right and title to such software shall remain with WCI, and WCI has the exclusive right to protect by copyright, or otherwise, to reproduce, publish, sell and distribute such software to anyone. Customer agrees to use reasonable controls to protect the confidential nature of all software without support from WCI for its own use at this location.

WCI believes that the software furnished is functional and usable. However, the amount to be paid WCI under this contract does not include any assumption of risk and WCI disclaims any and all liability for incidental or consequential damages arising out of the use or operation of the software provided here. Notwithstanding the foregoing, WCI shall not be liable to customer for consequential damages that may arise or be asserted by reason of the failure of the system software to perform in conformance with the specifications set forth above in this proposal. WCI's responsibility under the agreement for the purchase of the software, shall be to modify, repair, correct or replace the system software as delivered to customer, so that the modified, repaired, corrected or replacement system software conforms to the specifications agreed upon between WCI and customer.

Any software not described or any modification or additions thereto, are subject to additional charges at prior written prices acceptable to both parties.

In the unlikely event that WCI elects not to, or cannot for any reason, support the system software, WCI's remedies will include (but shall not be restricted to) the following: (a) WCI will subcontract the software support services either in whole or in part to a bonafide supplier of such services, or (b) WCI will agree to make available to customer a copy of all object program media plus system and operations documentation. WCI will not be responsible for any modifications made by customer to the software without the express written approval of WCI, and if such modifications are made without approval WCI shall be free from any and all liabilities arising from said modifications.

A limited (12-month) license to use the software with no-charge modem support is included. Unlimited (NBH) support will be provided for the first year (12 months immediately after achieving beneficial usage) of service. Normal Business Hours are defined as Monday through Friday, 8:30 a.m. to 5:00 p.m., Eastern Time (excluding WCI Company holidays). Prior to termination of the warranty period, a renewal

---

Unless specifically included and agreed to in writing by and between authorized persons, and the terms fully documented in the WCI proposal and/or purchase agreement, warranty software support excludes the following: travel to and from the site necessitated by peripheral failure, modifications performed by others, customer abuse/misuse. In all cases, Acts of God and natural disaster are excluded.

There are no warranties that extend beyond the face hereof. WCI expressly disclaims any other warranties, including, without limitation, the implied warranty of merchantability, fitness for use, and fitness for a particular purpose. In addition, WCI shall not be liable for any direct, incidental or consequential damages arising from or relating to claims brought pursuant to this limited warranty or claims under any agreement between WCI and customer.

It is agreed that WCI is a New Jersey Corporation, with its principal place of business in Kenilworth, New Jersey. Although the locations of customer's facilities are not necessarily located in New Jersey, this contract was negotiated, executed and intended to be performed in Kenilworth, New Jersey. It is therefore agreed that any legal action, in law or equity, to enforce any agreement between customer and WCI or which is in any manner based upon or relating to it, regardless of the state in which customer's facilities are located, shall be brought in a state or federal court of appropriate venue located in the State of New Jersey.

This limited warranty will not apply to customers whose payment accounts are more than thirty (30) days past due.

**WHITE CONVEYORS, INC., 10 BORIGHT AVENUE, KENILWORTH, NJ 07033**  
**TEL: (908) 686-5700 – FAX: (908) 686-9317**

Rev. 9/1/00

---

## **INTRODUCTION**

The following instructions for the installation of your White Conveyor U-PICK-IT Conveyor, are intended for use by personnel knowledgeable in conveyor installation procedures.

All fastenings, bracing, welding, electrical work, etc., must be done by competent and licensed professional in order to ensure a proper and safe installation. Experienced and trained people taking all precautions that are necessary to prevent accidents should do all maintenance.

Make sure all power to the conveyor is disconnected when servicing and that all control switches are in the OFF position when power is reconnected. All maintenance should be done by experienced and trained professionals taking all precautions necessary to prevent personal injury.

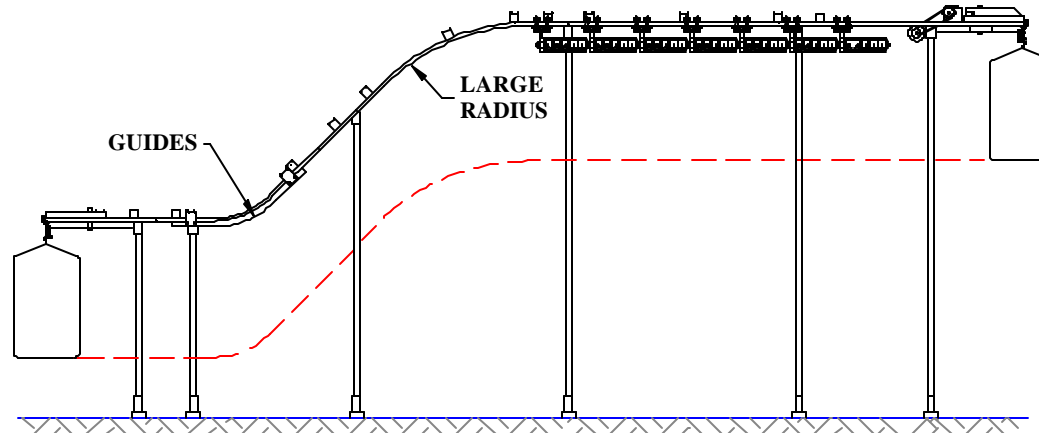
NOTE: Compliance with all federal and local codes when installing the conveyor is the responsibility of the installer and customer. Unless contractually stated otherwise.

---

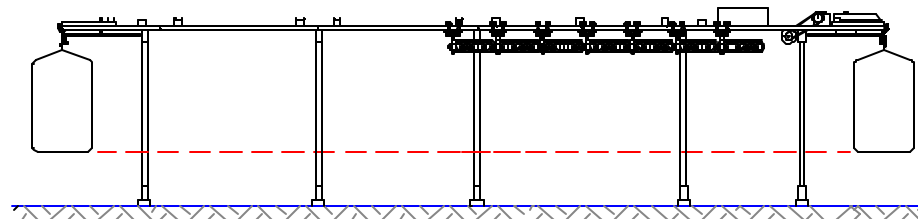
## U-PICK-IT CONVEYOR

Your new U-PICK-IT Conveyor was designed with ease and simplicity of installation in mind. These instructions provide a guide to the satisfactory reassembly of the crated conveyor. If they are followed in the sequence suggested, the assembly should be completed with a minimum of effort.

The two (2) standard configurations of the U-PICK-IT model that may be encountered are as shown in **Fig. 1 and 1A** below. Other special configurations are available.



**FIGURE 1**



**FIGURE 1A**

---

## 1. UNCRATING

1. Remove steel strapping.
2. Open the top of the box.
3. Loosen skid fastenings hold bases.
4. Removed conveyor section with bases.
5. Unpack stanchions.
6. Loosen setscrews on all stanchion sockets and bases to remove shipping poles.

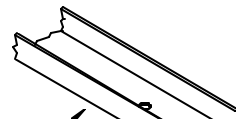
**NOTE:** When removing conveyor sections from crate, **DO NOT LIFT OR EXERT FORCE ON ALUMINUM FRAMES OR YOKES. SECTIONS SHOULD BE LIFTED BY TUBING RAIL OR CHANNEL FRAME. DO NOT ALLOW WEIGHT OF MACHINE TO REST ON MOTOR CONTROL BOX.**

## 2. CONVEYOR ASSEMBLY PROCEDURE

It is left to the installer to determine the point at which installation is to be started. If certain distances must be maintained to walls, fixtures, call office counters, etc. These should be taken into account prior to starting installation.

Generally a standard nose down conveyor is started at the lower nose section.

1. Position bases on floor in final location.
2. Position conveyor sections on top of bases (motor end toward rear of plant or service center.)
3. Slip stanchions through conveyor sockets and into base sockets.
4. Tighten setscrews in base sockets.
5. Slide drive end section of conveyor up stanchions until centerline of tubular track is at elevation shown on conveyor layout.
6. Tighten setscrews in conveyor sockets.
7. Raise each section and connect to adjacent section.
8. Join track sections. Each track section is fitted on one end with a rail insert (**White P/N 0089-01-PA**) having two (2) No. 10 self-tapping screws. Connection of the adjoining section of conveyor track is made by placing the rail insert into the open end of the next section. Pull sections tightly together and insert two additional self-tapping screws as shown in **Fig. 2** below. Each joint shall be straight and square with no opening between track sections.

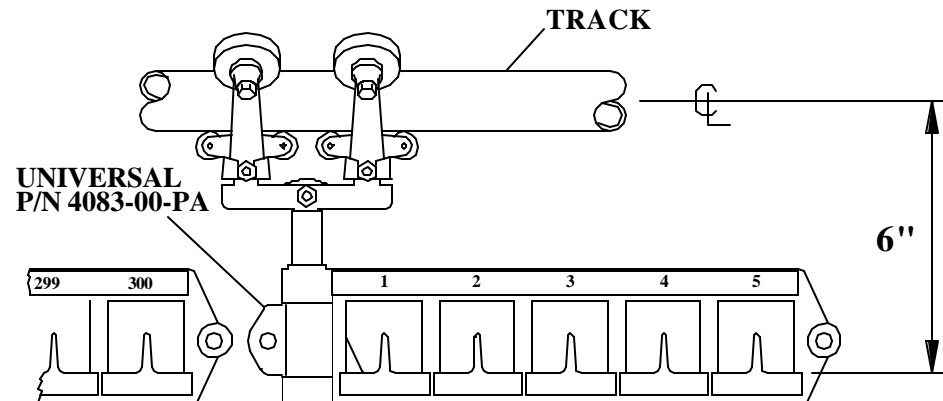


9. Tighten bolts on joiner.
10. Check each base to see that it is flat on floor.
11. Line up all stanchions to make sure conveyor is straight, level and weight is evenly distributed.

### 3. CONVEYOR CHAIN ASSEMBLY

Prior to joining the final section of conveyor track, the U-PICK-IT chain should be mounted on the conveyor, and joined to each connecting section at the horizontal hinge pin, see **Fig. 3** below.

1. Slip the front of frame (**White P/N 4081-01-AA**) into the matching universal (**White P/N 4083-00-PA**), lining up the horizontal pin hole.
2. Insert pin having one E-Ring from the side of the universal having the indentation to accept the E-Ring shape. Push through and install the second E-Ring on the opposite side.
3. Repeat at all joints of the connecting sections.
4. After conveyor chain has been assembled, the numbered adhesive strips are then placed on the top of each frame, number left to right.



---

#### 4. LEVELING, ANCHORING AND BRACING

1. Tighten all setscrews in each base stanchion socket.
2. Level machine by using a surface-leveling device along top of conveyor. Make sure all dips are removed before operating.
3. Eliminate uneven dips by raising the conveyor and tightening setscrews in the upper socket.
4. Check to see that all stanchion set screws are tight.
5. Anchor bases to floor (**See Section 13-2.2 first for U-PICK-IT Enclosure mounting dimensions**) with lag screws except for the end sections.
6. It is important that you also **SWAY BRACE** (provided by installer) your conveyor to some rigid structure of building (wall, ceiling, column, etc.). This is necessary to protect your conveyor against sudden starting and stopping motions, uneven loading, etc. To sway brace your conveyor effectively, three (3) braces are recommended. Use two (2) braces on the length of the conveyor (using plain pipe or angle iron) and one (1) brace on the end. Bolt from upper cross frames of conveyor to building.

#### 5. DETERMINING TRACK LENGTH

Prior to shipment, the chain track length was properly adjusted by our factory professionals.

All chain must be connected with the exception of one horizontal hinge pin (**White P/N 4085-00-PA**), See Fig. 3.

Proper chain sizing can be done, by inserting nylon short tube spacers provided.

#### 6. SPEED REDUCER

Keep speed reducer free of dirt to permit heat transfer from the gearbox case. See Conveyor Maintenance Manual p. 13.

#### 7. SPEED REDUCER DRIVE CHAIN ADJUSTMENT

The roller chain connection, speed reducer and the drive sprocket were properly adjusted prior to leaving the factory. However, after an initial period, this chain stretches and should be readjusted. See Conveyor Maintenance Manual p. 14.

**NOTE: FAILURE TO READJUST WILL RESULT IN THE CHAIN SAGGING, CAUSING MISALIGNMENT WITH THE SPROCKET AND ACCELERATED CHAIN WEAR**

---

## 9. MOTOR DRIVE BELT ADJUSTMENT

The drive belt between the motor and speed reducer is properly adjusted upon installation at the factory. See Conveyor Maintenance Manual p. 14.

## 10. CLUTCH

All WHITE U-PICK-IT conveyors drives are equipped with a clutch. The clutch mounts on the motor and provides for smooth starting of the conveyor.

To check for proper operation, start the conveyor and observe if the conveyor starts abruptly. Proper starting should be smooth with a small amount of slipping before the conveyor reaches full speed. Excessive slippage indicates the conveyor is overloaded or the clutch is defective.

**NOTE: IF THE CLUTCH IS ALLOWED TO SLIP CONTINUOUSLY IT WILL CAUSE RAPID HEAT BUILD UP WHICH WILL BURN OUT THE CLUTCH FACINGS. NEVER LET THE MOTOR RUN IF THE CONVEYOR JAMS.**

## 11. HAND SWITCH AND HAND SWITCH ARM ASSEMBLY

1. Remove the nuts (ITEM 4) and the retaining strap (ITEM 3) from eyebolts.
2. Place the arm and the eyebolts in the location you have chosen. View "A-A" shows the orientation of the eyebolts and strap in relation to conveyor frame.
3. Bolt and position hand switch arm at assigned load station location (See Fig. 4).
4. Replace the strap and hand tighten the nuts. Extend the arm out from the conveyor frame approximately 12" to 15" to clear the moving garments (See Fig. 4). Tighten the nuts with a 1/2" socket or wrench.
5. Connect switch control cable to junction box at drive end by matching wire colors.
6. Tape or wire tie all wiring to posts, so that sprockets and garments cannot snag wiring.
7. Make sure all switches are in "OFF" position.
8. Remove all tool and obstructions from conveyors.
9. Connect machine to CORRECT power source.

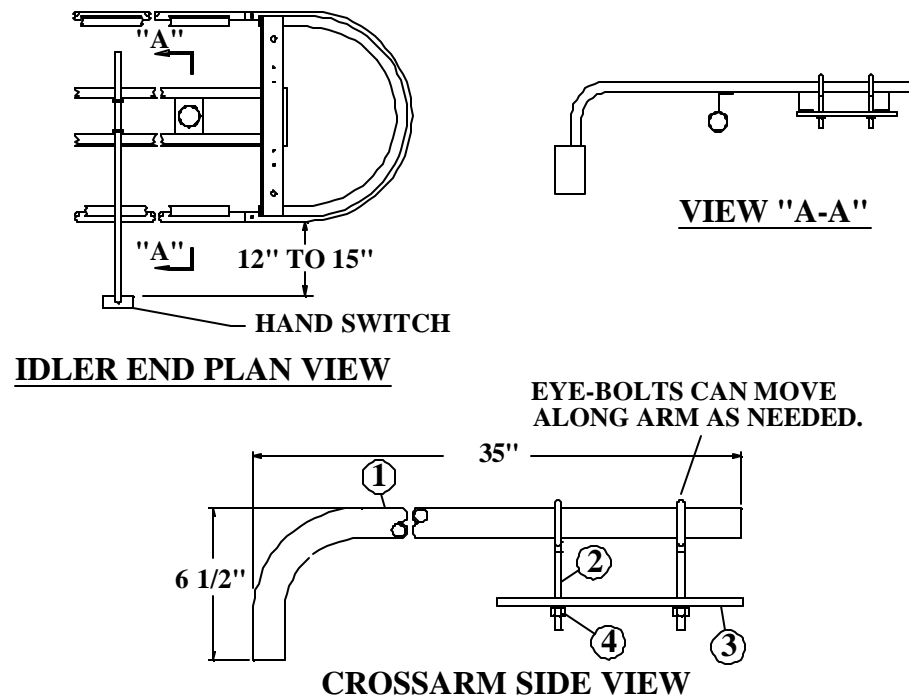


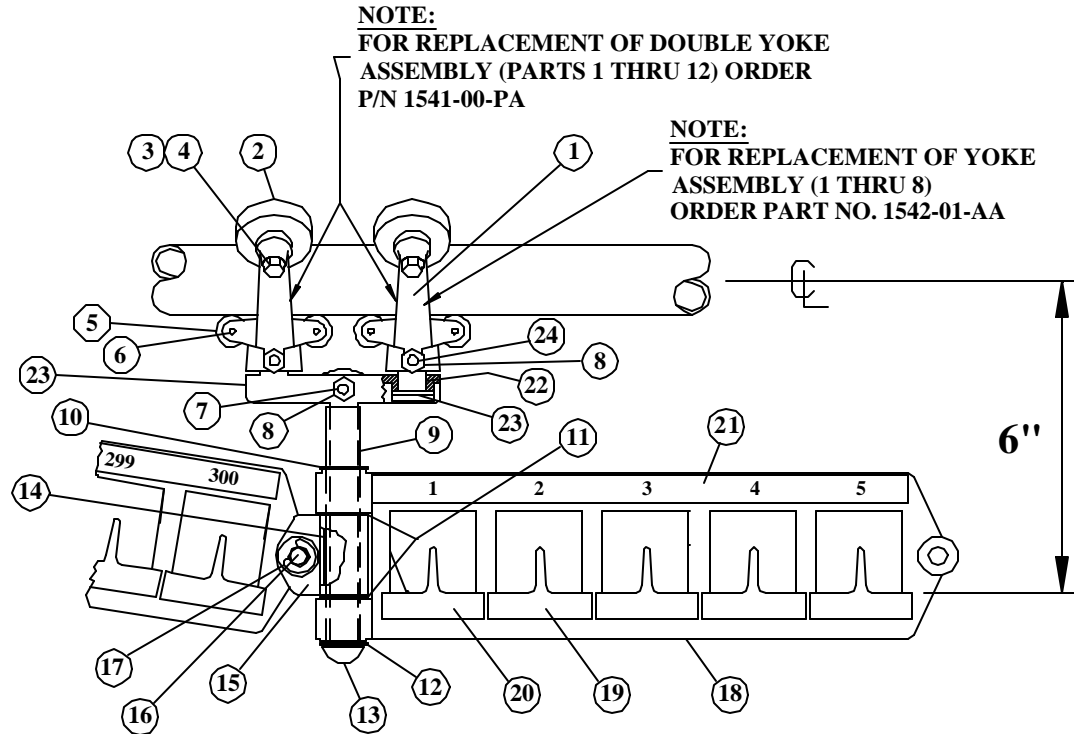
FIGURE 4

---

**CAUTION: USE ONLY 120 VOLTS, SINGLE PHASE, 60 CYCLES UNLESS MARKED OTHERWISE. CUSTOMER MUST PROVIDE AN APPROVED ELECTRICAL CONNECTION. SEE WIRING DIAGRAM AT REAR OF MANUAL OR INSIDE MOTOR CONTROL.**

10. Operate manual hand switch forward and reverse.
11. Observe operation:
  - a) Chain should roll freely on track.
  - b) All nylon wheels should turn. (Check for dirt picked up during shipment).
  - c) Look for parts damaged in shipment.
12. Because single-phase capacitor start motors are not instantly reversible you must wait 2 seconds before changing conveyor direction.
13. If the conveyor has a **THREE (3) PHASE** motor, a time delay is built into the electrical starting circuit to prevent instantaneous reversal of the conveyor.

## 12. U-PICK-IT CHAIN ASSEMBLY



**FIGURE 5**

### CHAIN ASSEMBLY WHITE P/N 1539-17-AA

ITEM	WHITE P/N	DESCRIPTION	QTY
1	0015-03-PA	YOKE, Y-1, ALUMINUM DIE CAST	2
2	0016-00-PA	WHEEL, NYLON, W/BEARING 1 3/8"	4
3	0019-00-PA	SCREW, RH, #1/4-20 X 1 1/4"	4
4	0063-01-PA	NUT, LOCK, TWO-WAY, #1/4-20	4
5	0017-00-PA	GUIDE ROLLER, NYLON	4
6	0014-00-PA	ROLL PIN, 3/16" X 1 1/8"	4
7	0474-01-PA	TEE HEAD SCREW, #10-32 X 1 1/2"	2
8	0044-05-PA	NUT, ESN, LOW PROFILE, #10-32	3
9	0012-03-PA	SPACER, SPLIT TUBE 1 1/2"	1
10	0013-04-PA	WASHER, 1/2" X 3/4" X .064	3
11	0013-01-PA	WASHER, 7/8" X 21/32" X .030	2
12	0013-00-PA	WASHER, 13/16" X 17/32" X .030	1
13	0011-07-PA	HINGE PIN 5.06L, CAT DRIVE	1
14	4084-02-PA	BUSHING, STEEL	1
15	4083-00-PA	UNIVERSAL, STEEL	1

---

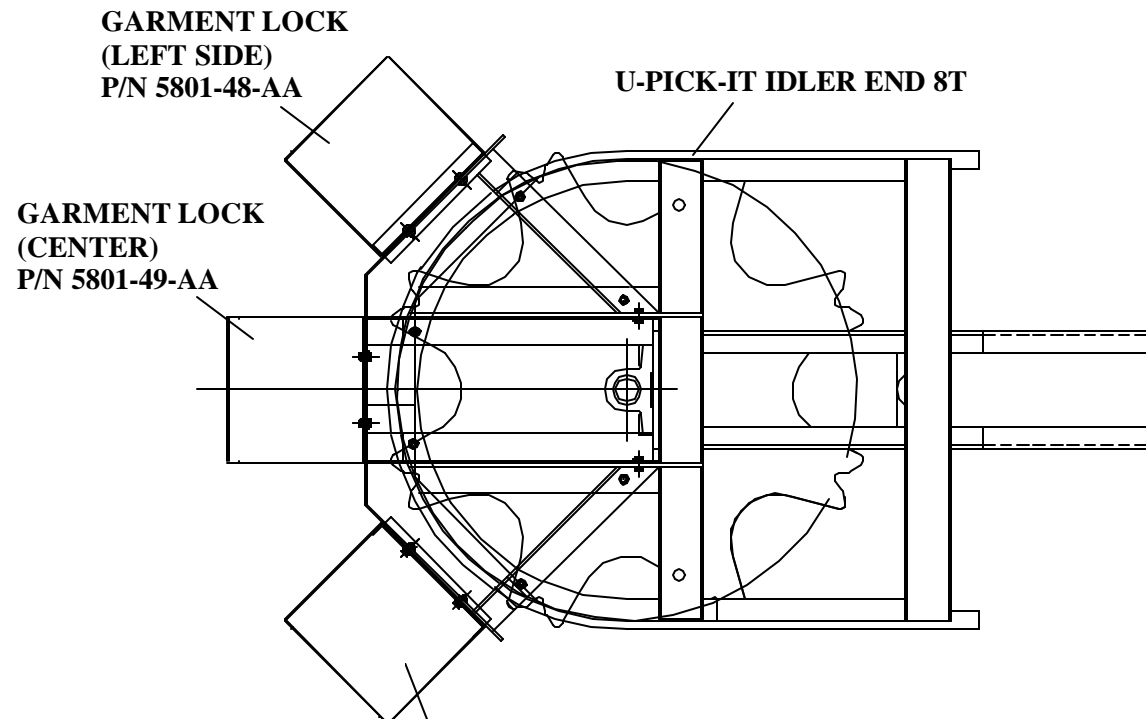
### **13. U-PICK-IT DESCRIPTION AND INSTALLATION INSTRUCTIONS**

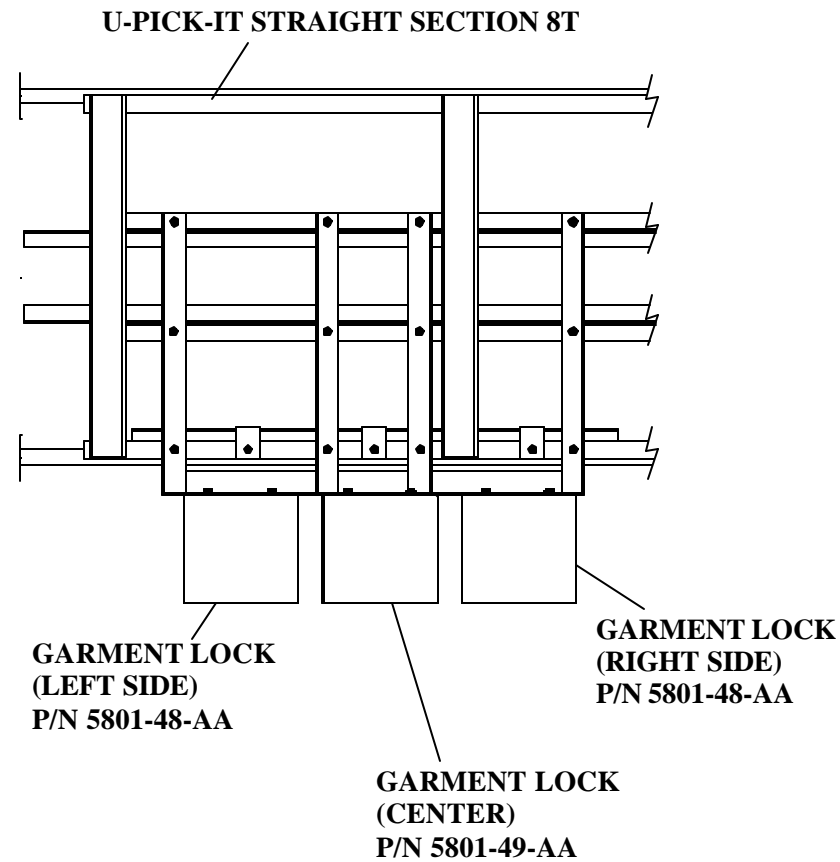
Subsequent to shipment, your WHITE U-PICK-IT Pneumatic garment lock system was completely assembled to idler end or straight section (per customer's requirements) of conveyor and tested to ensure perfect operating performance. Every effort was made in crating to protect this machine enroute to you from our factory. Upon delivery, the crate should be examined for external damage incurred during shipment. If damage is observed a claim should immediately be filed with the carrier making delivery.

**NOTE: THE U-PICK-IT SYSTEM CAN BE LOCATED AT EITHER THE IDLER END OR AT A STRAIGHT SECTION OF THE CONVEYOR, PER CUSTOMER'S REQUIREMENTS (SEE FIG. 6 AND 7).**

The U-PICK-IT system consists of the following:

1. PNEUMATIC GARMENT LOCK SYSTEM (See Fig. 6 and 7)
2. FRONT U-PICK-IT ENCLOSURE (See Fig. 10)



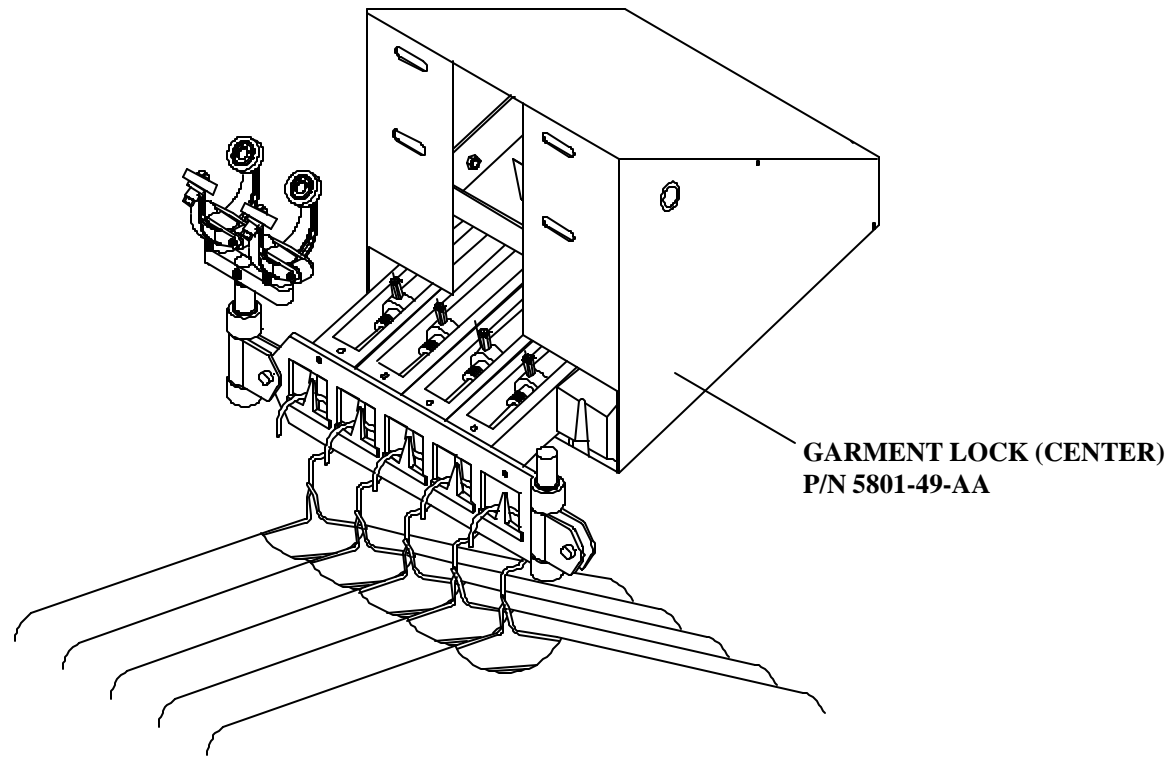


*STRAIGHT SECTION*

**FIGURE 7**

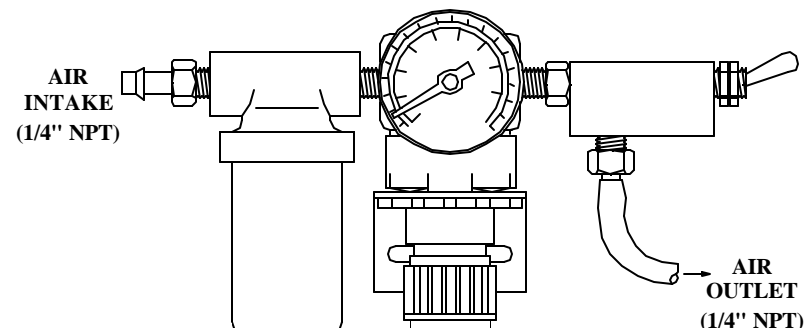
1. PNEUMATIC GARMENT LOCK SYSTEM

Each conveyor frame (See Fig. 3) consists of 5 slots, the automated (pneumatic) garment lock system, allows employees ONLY access to the garment bag in their pre-assigned slot location. The system consists of three (3) locking mechanisms, left, center and right (See Fig. 6 or 7). When an employee retrieves his or her garment bags, the pre-assigned slot unlocks (See Fig. 8) while the other four slots remain



**FIGURE 8**

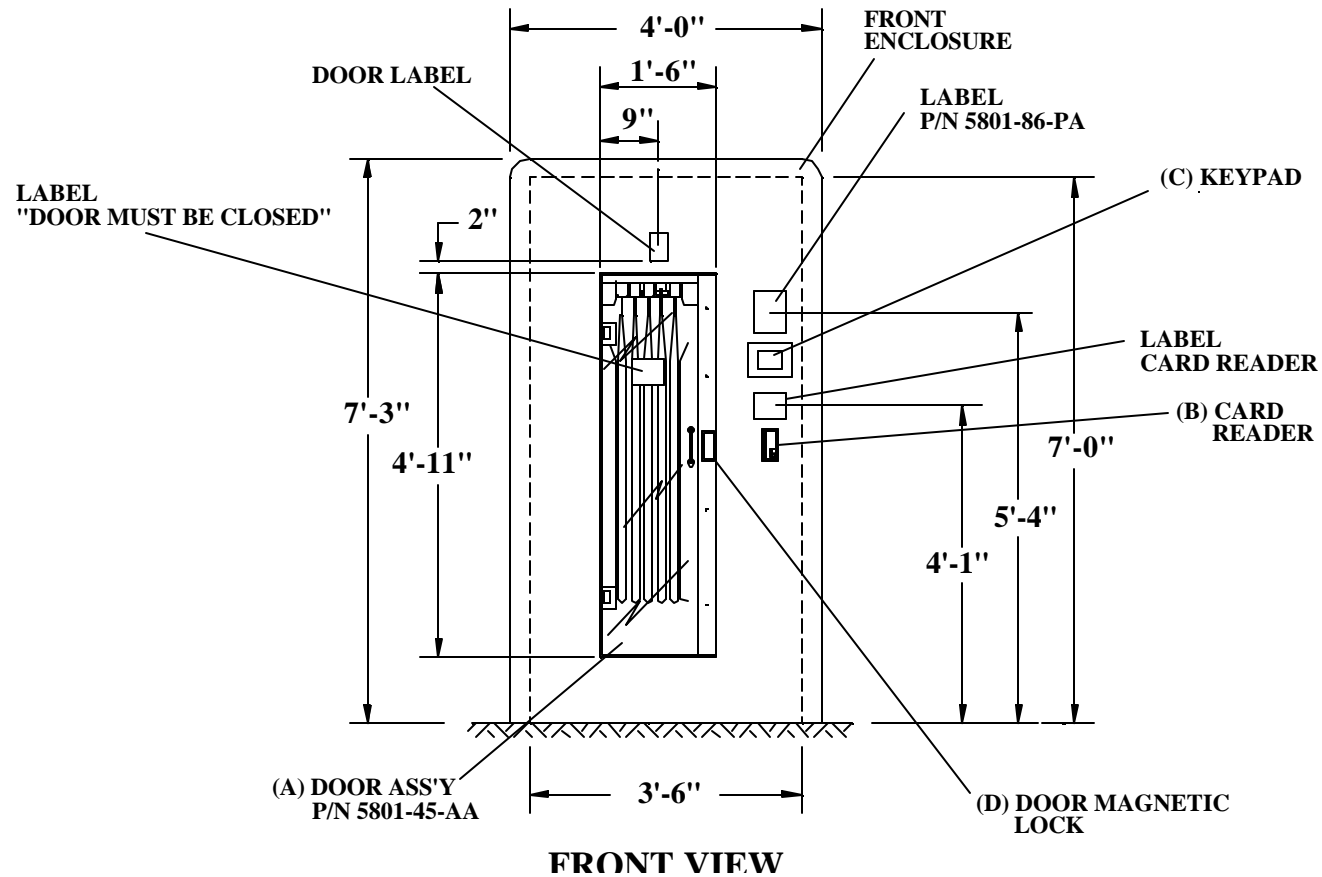
A filter, regulator and air gauge assembly (**P/N 2311-04-AA**) is supplied near the garment lock system to filter and regulate airflow (See **Fig. 9**).



## 2. FRONT ENCLOSURE

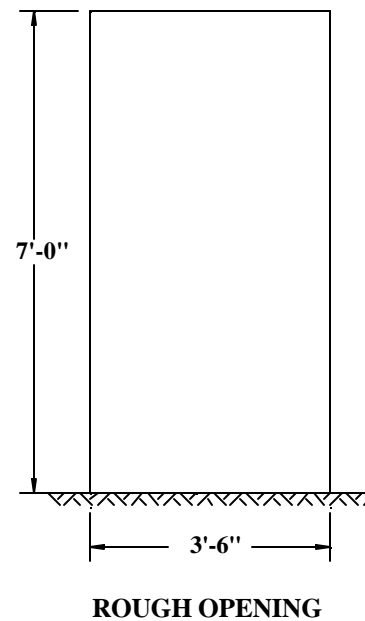
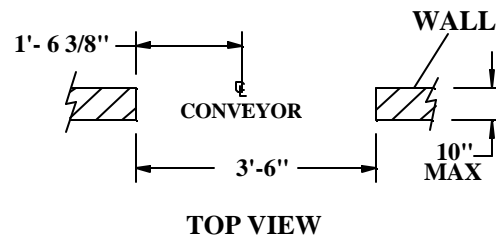
1. The U-PICK-IT front enclosure allows employees access to their garment bags, which have been loaded on the conveyor in pre-assigned slots, it's fabricated from 3/4" plywood with a pre-selected (BY CUSTOMER) color laminate finish. The enclosure consists of the following components (See Fig. 10)

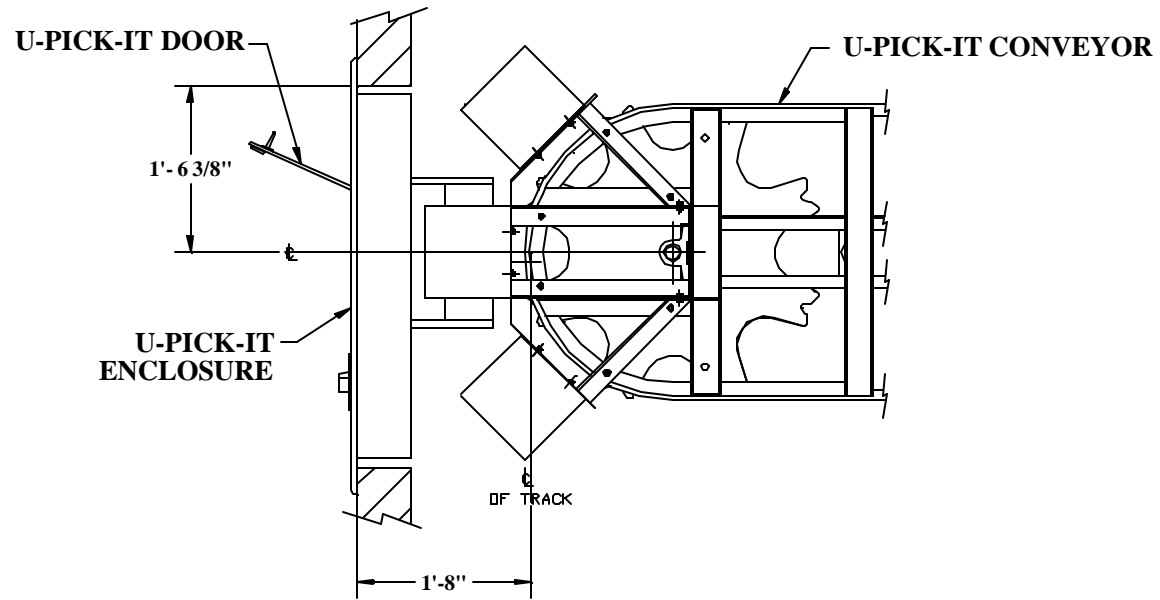
- A) Access Door
- B) ID Card Reader
- C) Keypad Screen
- D) Door Magnetic Lock



- 
- A) Access Door - Allows access to garment bags, made from 1/2" LEXAN.
  - B) ID Card Reader – Allows employee's access to his/her garments bag, by swiping their I.D. card.
  - C) Keypad Screen – Allows employee's without I.D. cards to retrieve their garment bag, by entering the employee's identification number.
  - D) Door Magnetic Lock – Keeps access door locked with up to 700 lbs. of force.

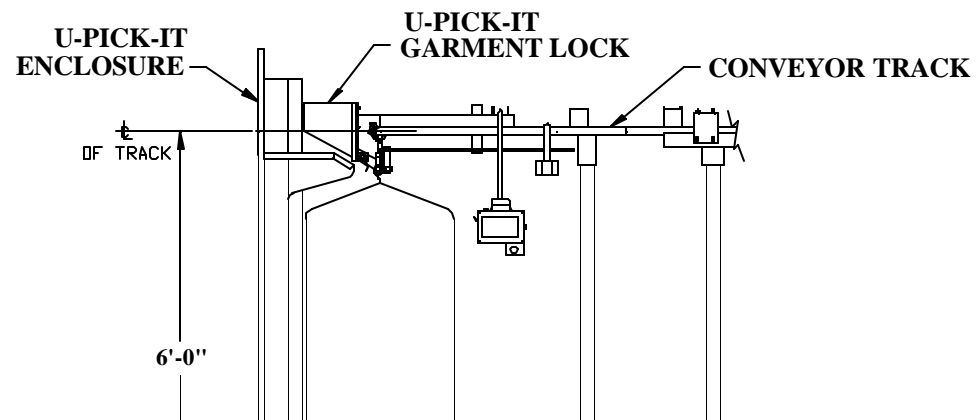
To mount the enclosure to the wall, the customer must supply a wall opening of 3'-6" wide by 7'-0" high, **MAXIMUM** wall thickness must be 10" (See Fig. 11).

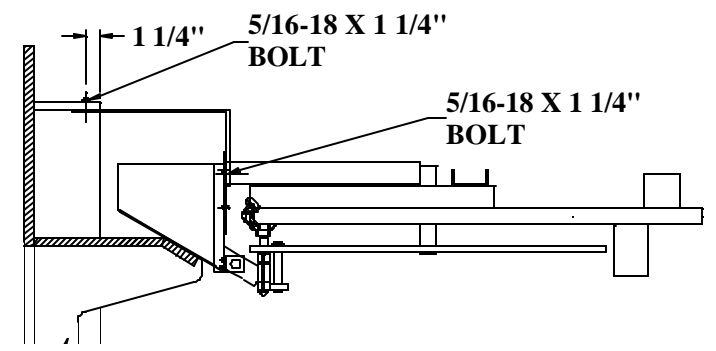
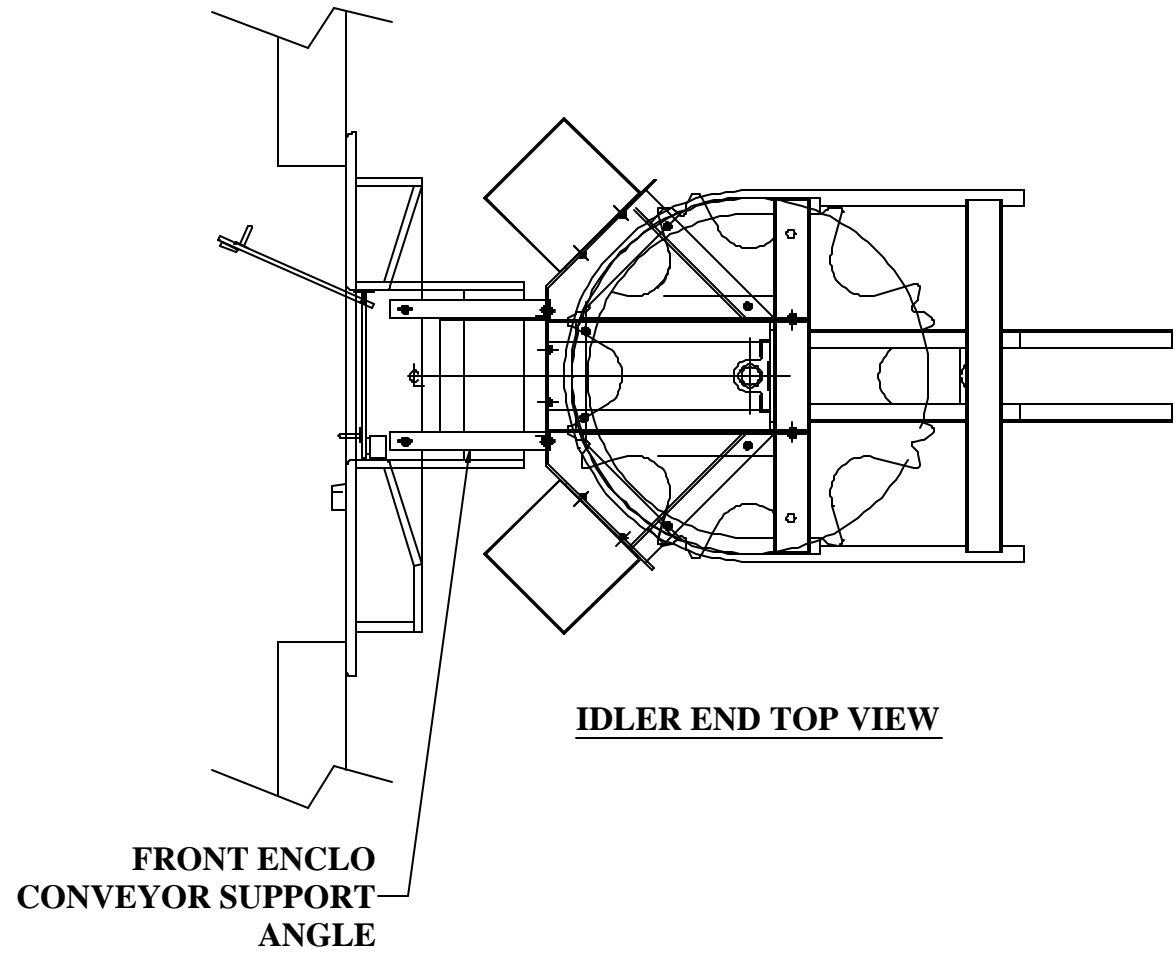




**U-PICK-IT STATION**

**FIGURE 12**

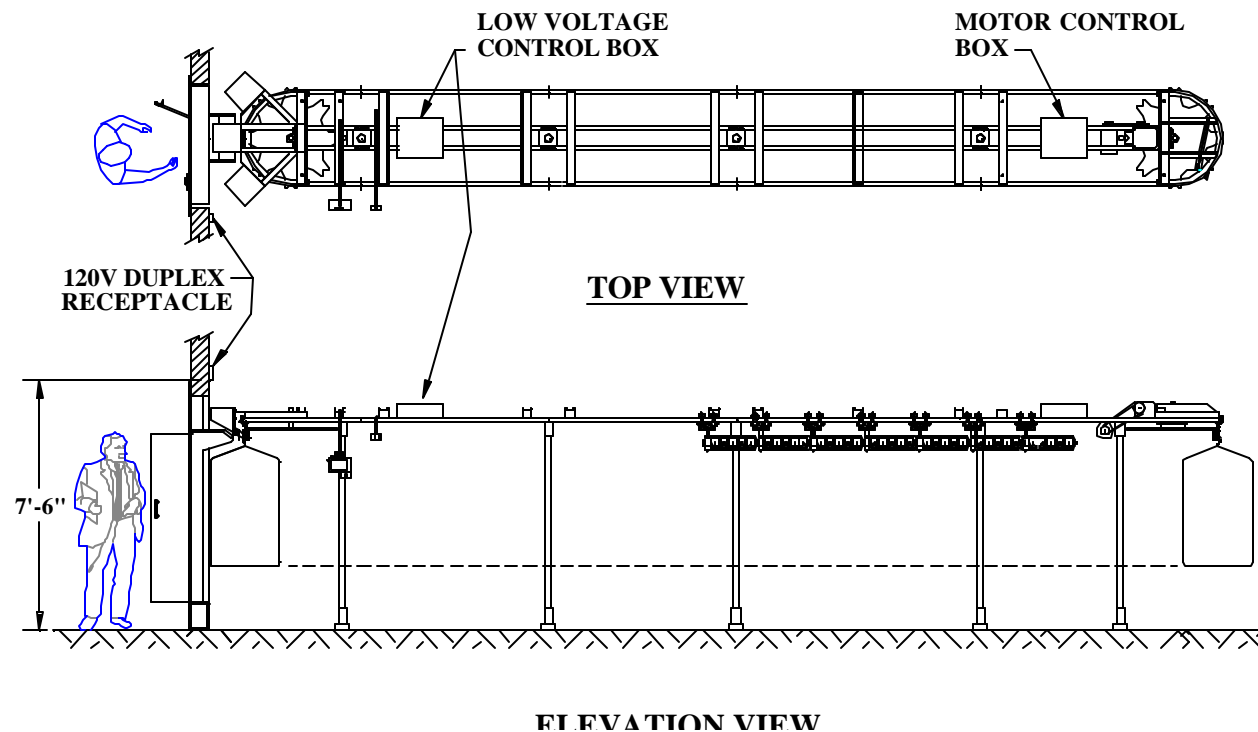


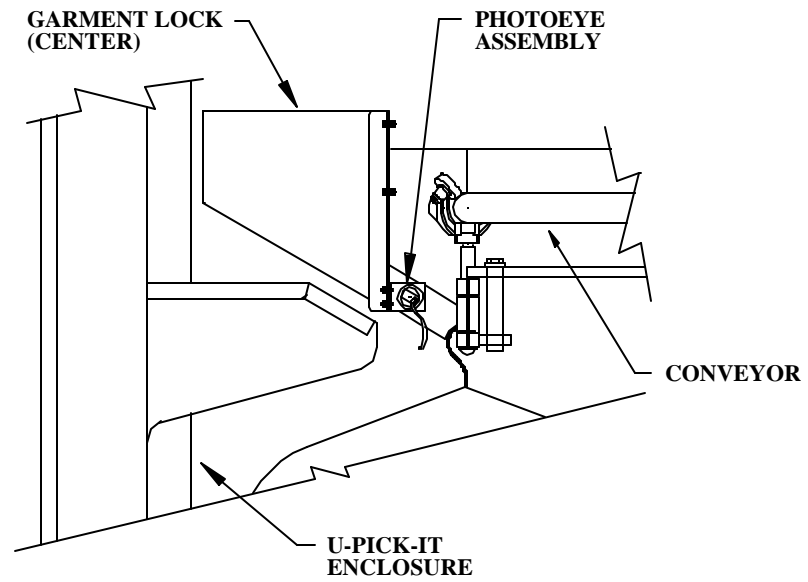


## 14. U-PICK-IT ELECTRICAL INSTRUCTIONS AND REQUIREMENTS

Every U-PICK-IT conveyor requires three (3) DEDICATED electrical power feeds, as listed below (ALL SUPPLIED BY CUSTOMER).

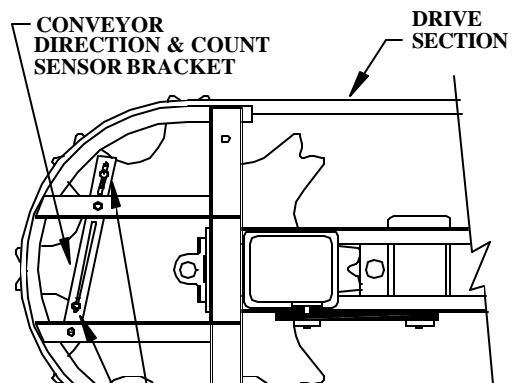
1. 120V, Single Phase, 20 Amps feed for motor control box, located at drive end of conveyor with a fusible safety disconnect (SUPPLIED BY CUSTOMER) See **Fig. 14**.
2. 120V, Single Phase, 20 Amps quad outlet power feed, for conveyor low voltage control box, located at idler end of conveyor, 6'-6" above floor (SUPPLIED BY CUSTOMER) See **Fig. 14**.
3. 120V, Single Phase, 20 Amps duplex receptacle at U-PICK-IT enclosure, located at 96" above floor (BY CUSTOMER) See **Fig. 14**.





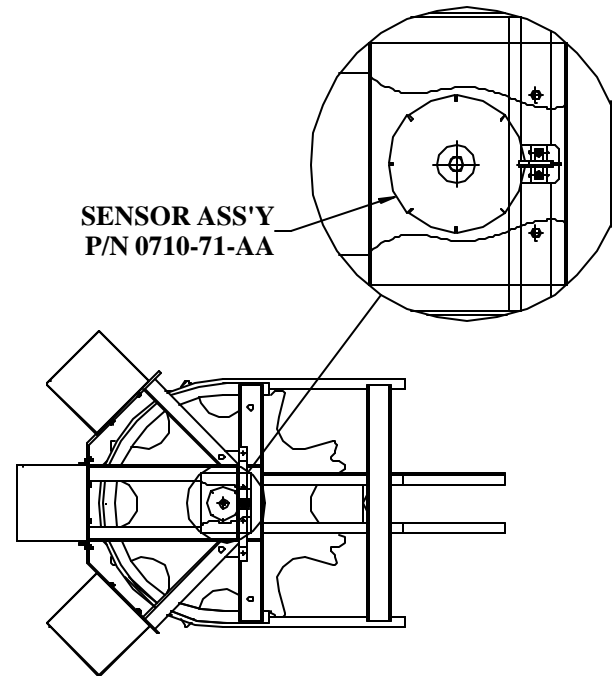
**FIGURE 15**

At the drive end of the conveyor, there are two (2) proximity sensors (P/N 0710-64-AA); these sensors control the frames count and direction of conveyor (**See Fig. 16**).



---

Located at the idler end of the conveyor and to align the frame exactly at the U-PICK-IT garment lock system, there is one (1) proximity sensor assembly (P/N 0710-71-AA). As the conveyor is slowing to a stop, the sensor determines if the frame is at the pre-assigned location and aligned with the locking mechanism (**See Fig. 17**).



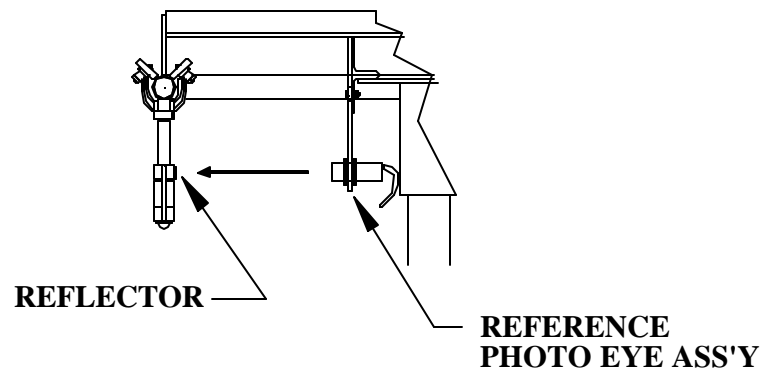
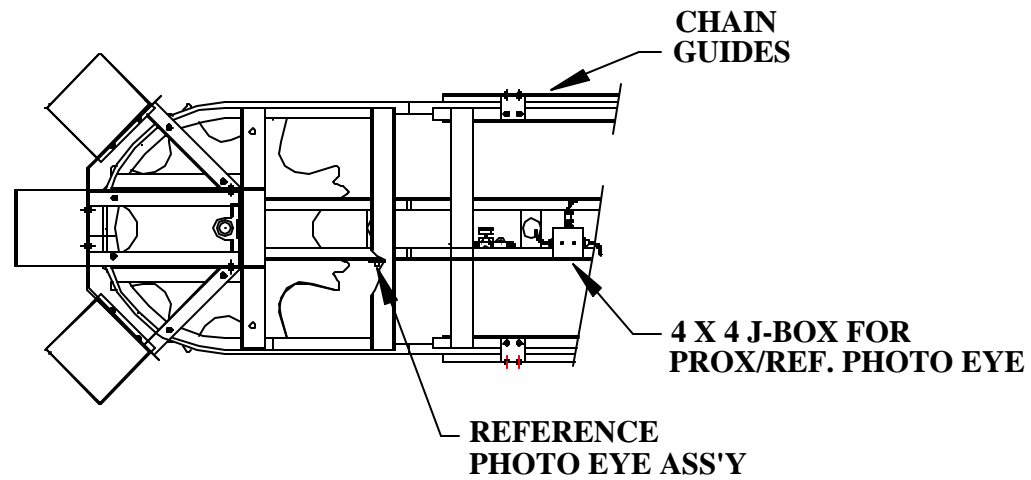
**IDLER END TOP VIEW**

**FIGURE 17**

---

Also, located at the idler end of the conveyor and to verify the location given by the proximity sensor P/N 0710-61-AA, there is one (1) Reference photo eye and reflector assembly (P/N 0710-60-AA).

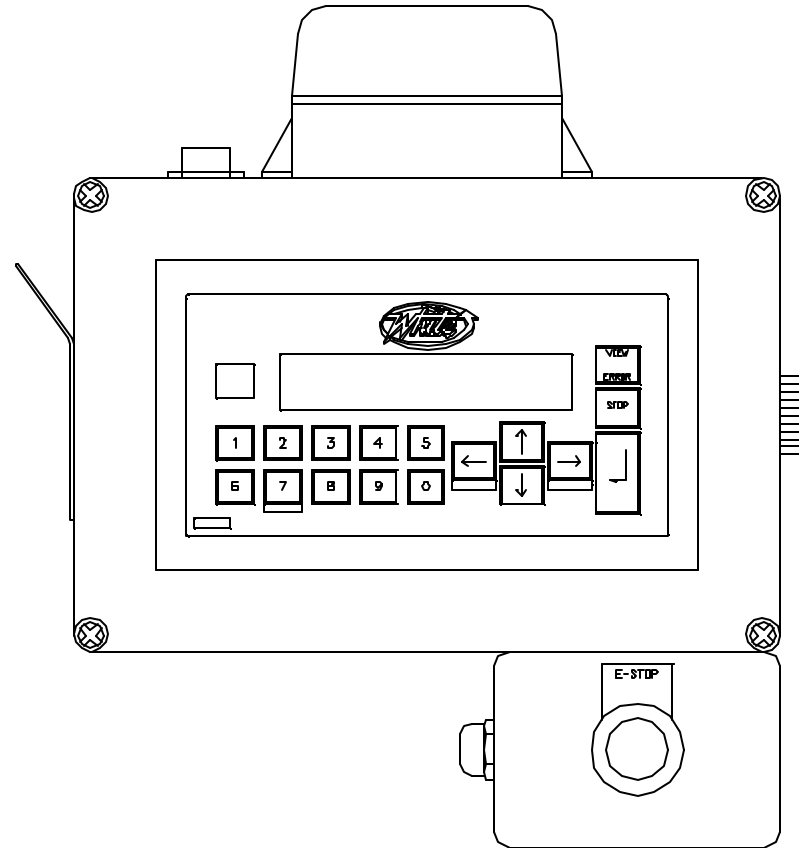
This Reference photo eye assembly confirms the location of the frame; to be correct before the garment lock system is activated (**See Fig. 18**).



**SIDE VIEW**

---

To operate the conveyor manually or to load garment bags on the conveyor, the system is equipped with an “OCS” (Operator Control Station) enclosure (See Fig. 19).



**FIGURE 19**